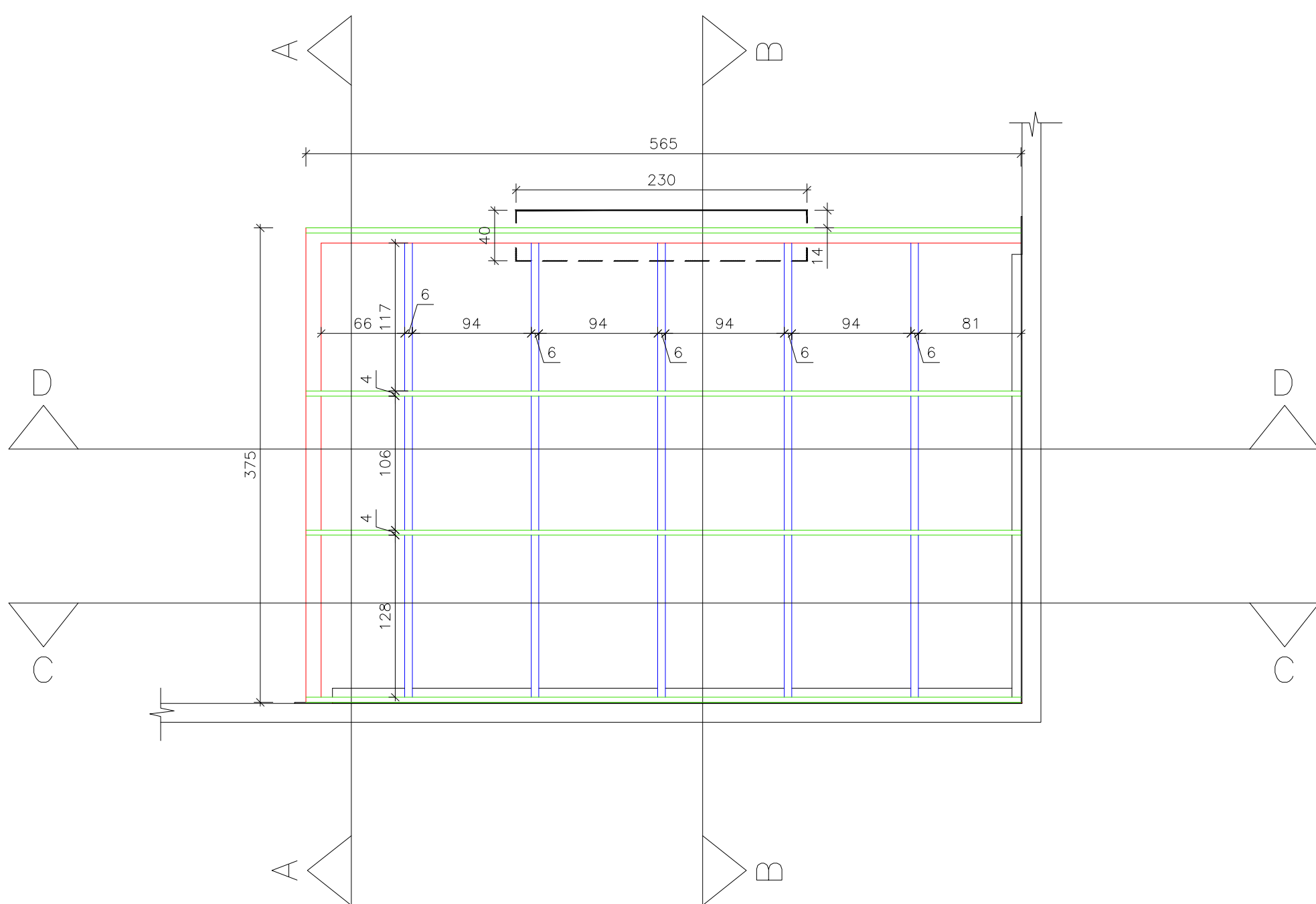
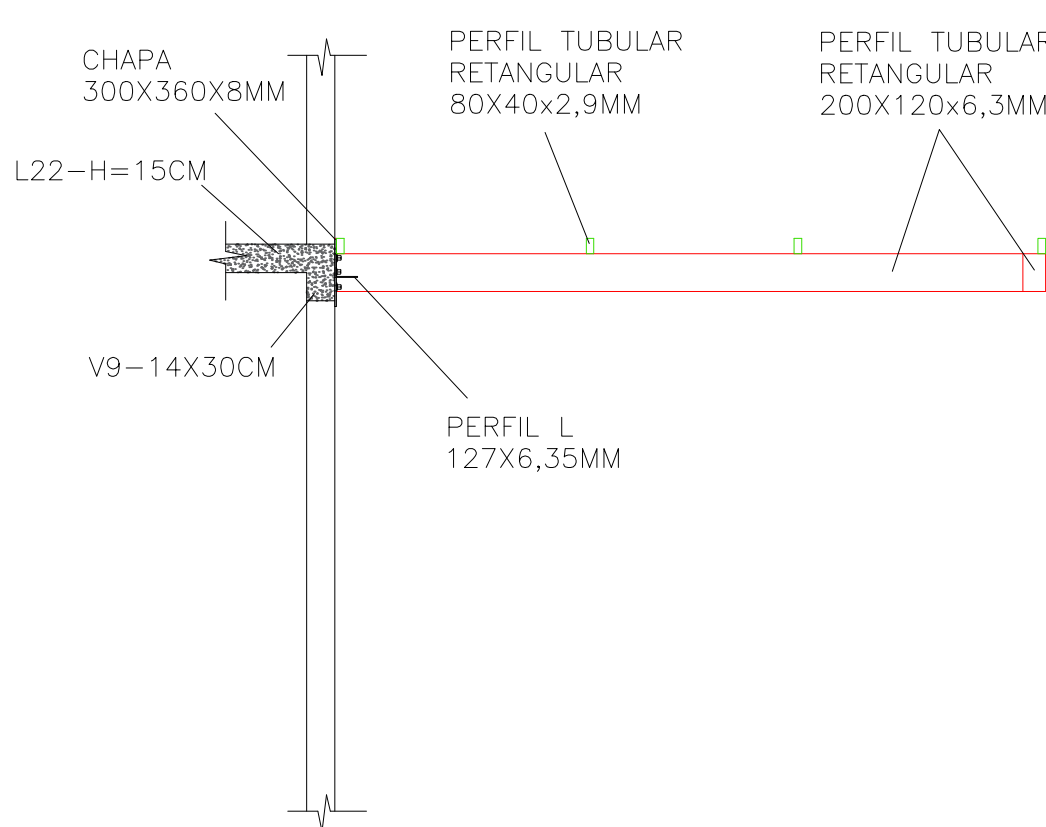


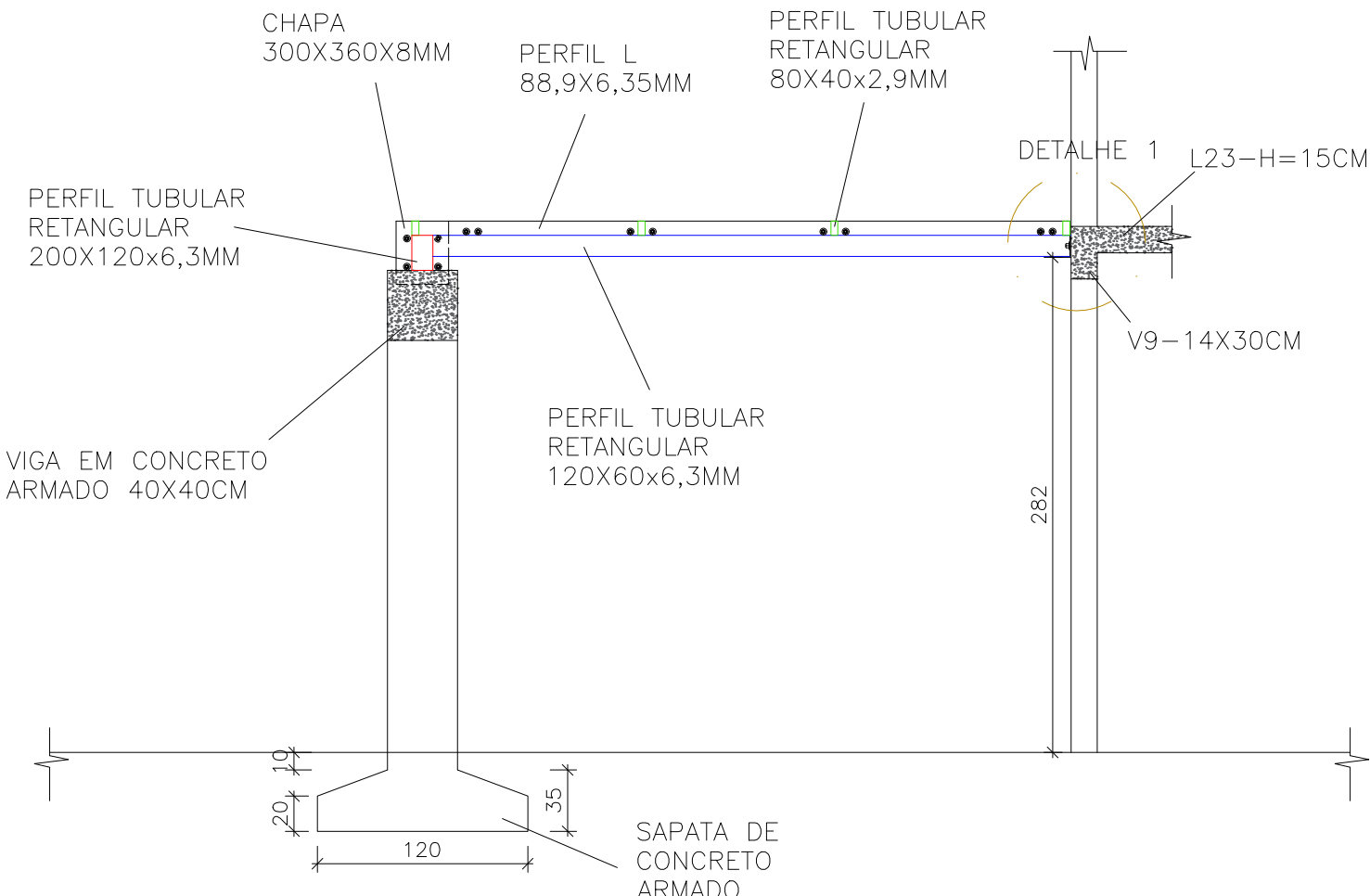
PLANTA BAIXA  
1/40



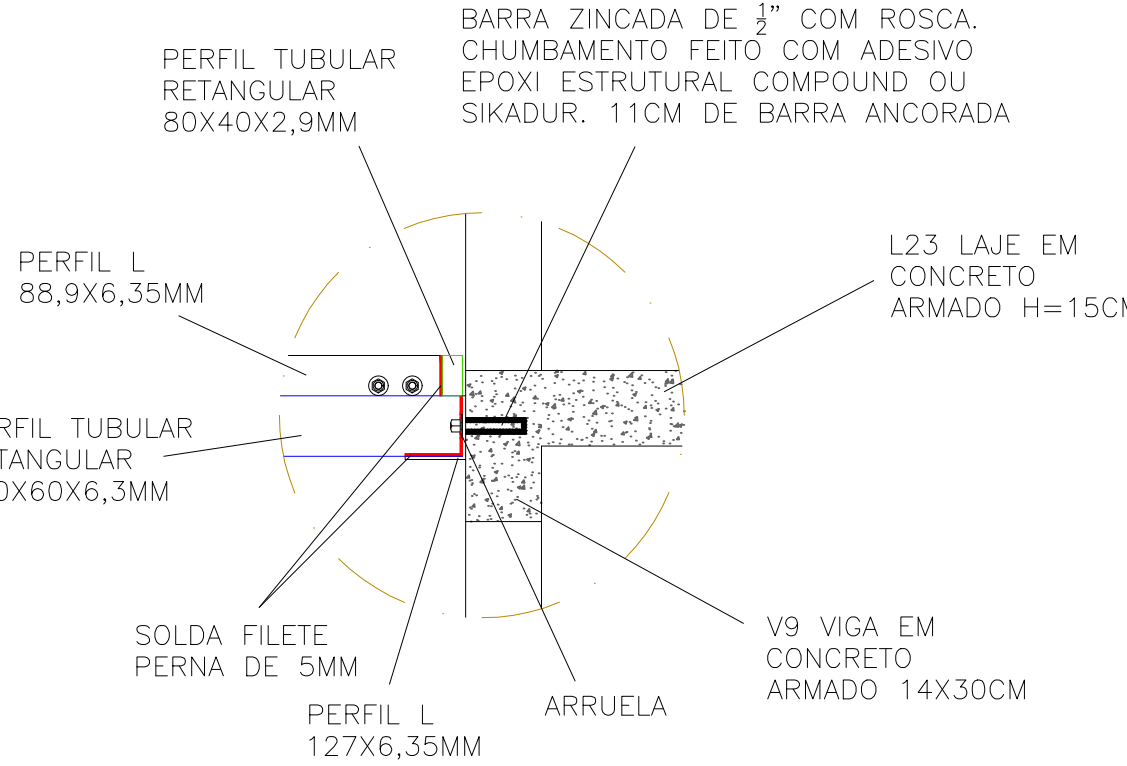
CORTE A-A  
1/40



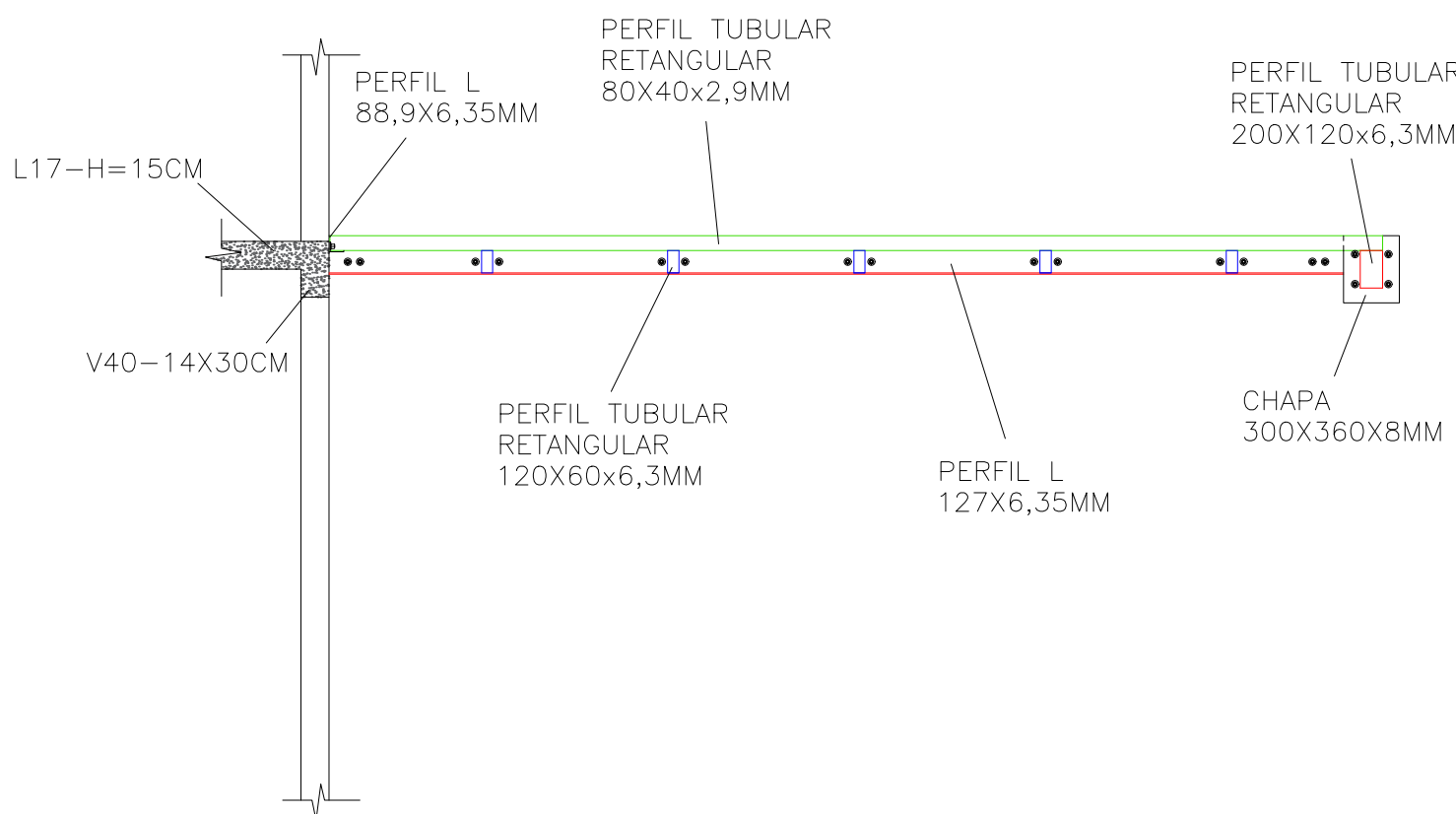
CORTE B-B  
1/40



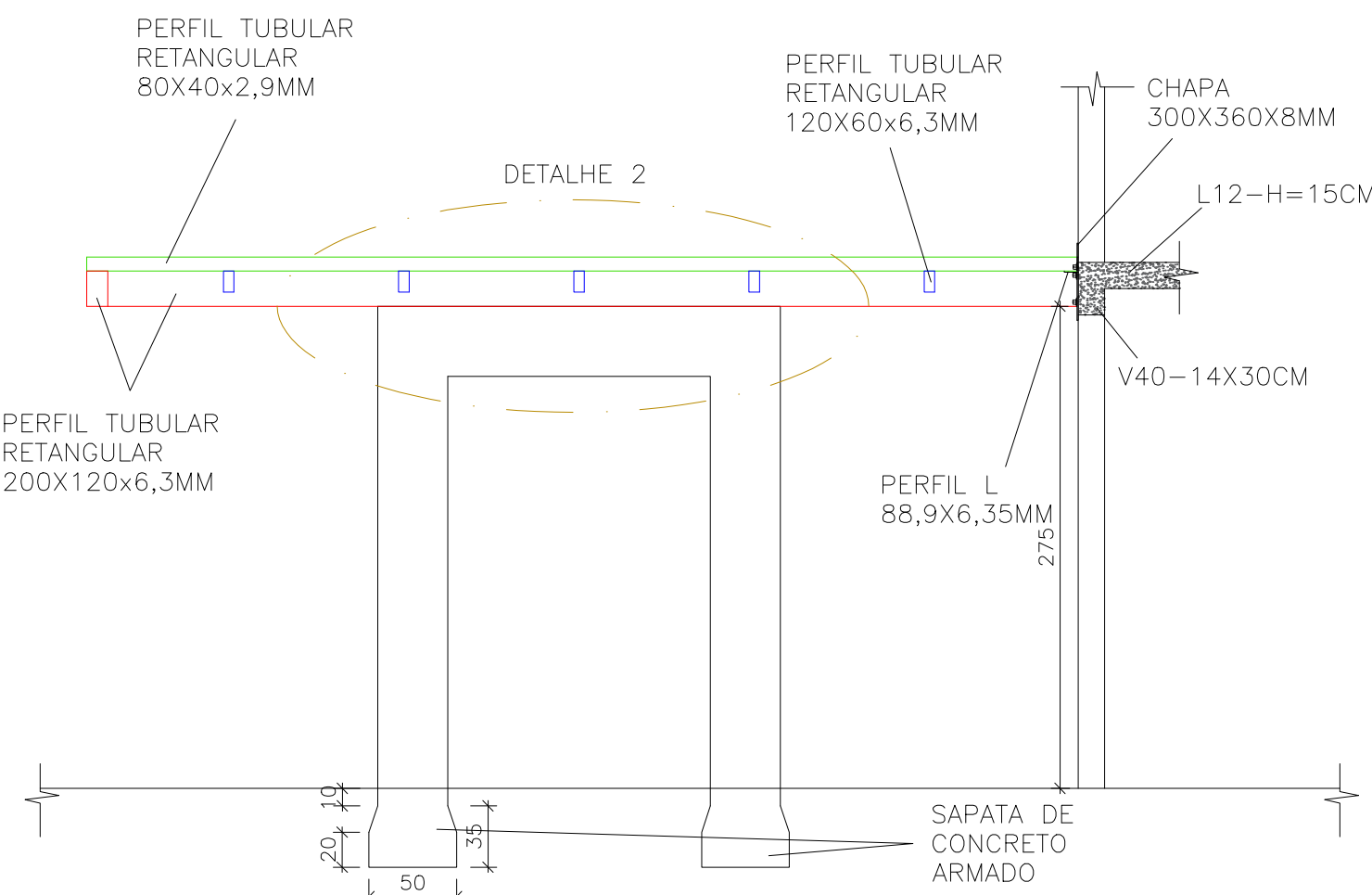
DETALHE 1  
1/15



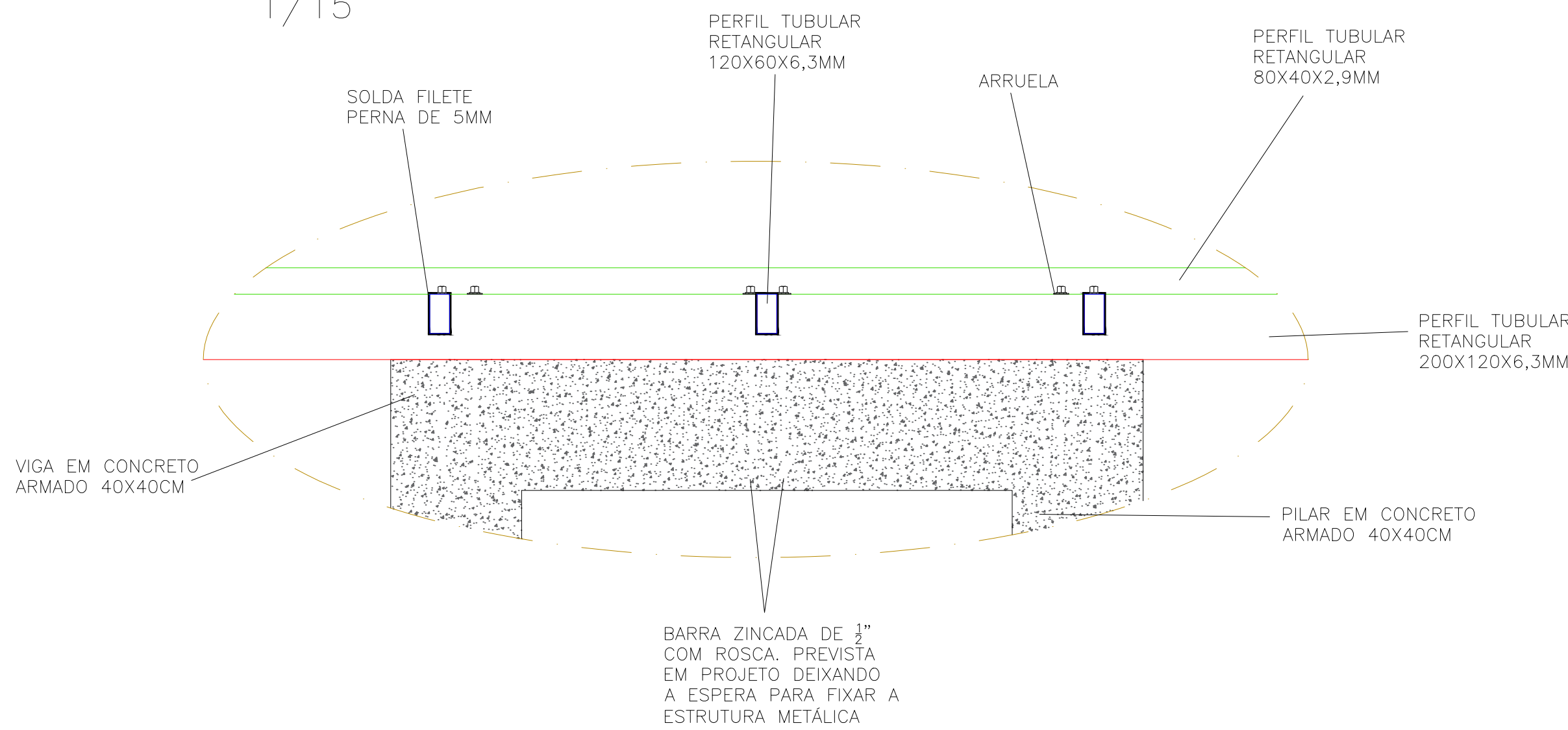
CORTE C-C  
1/40



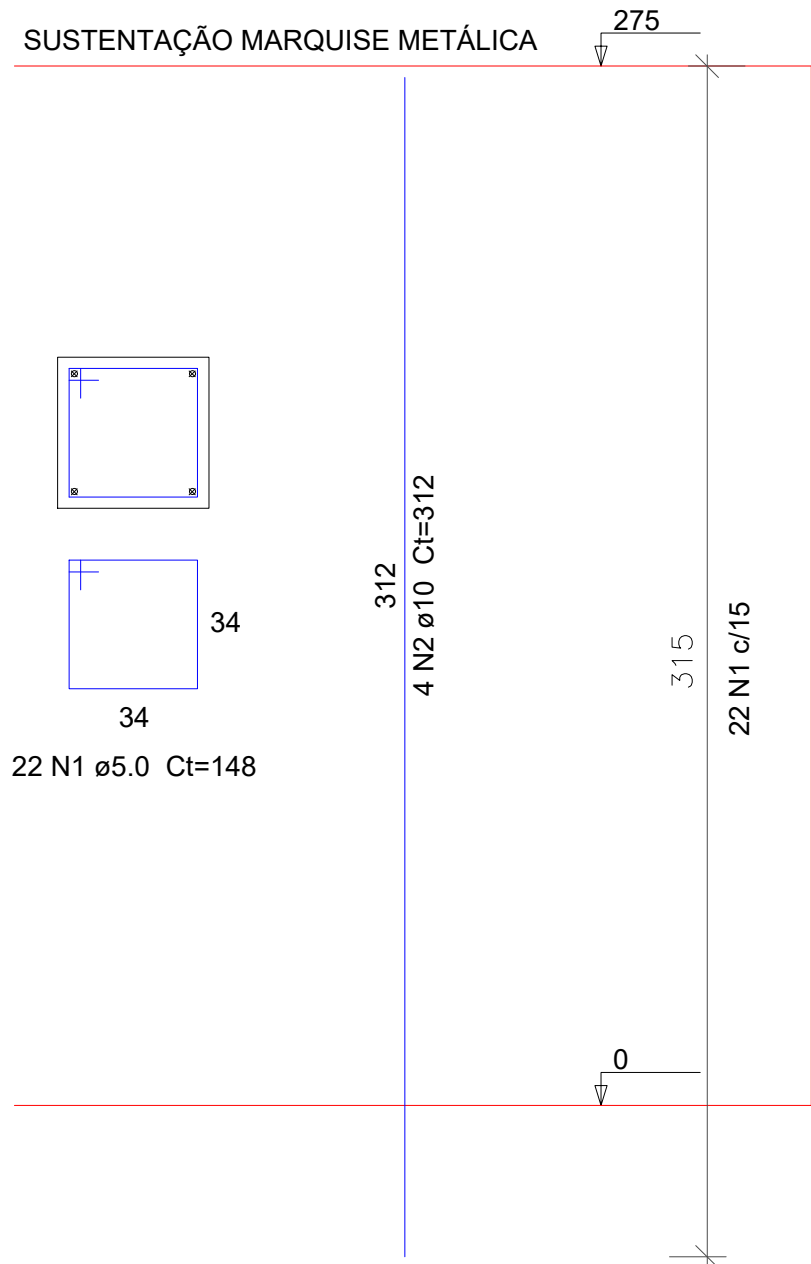
CORTE D-D  
1/40



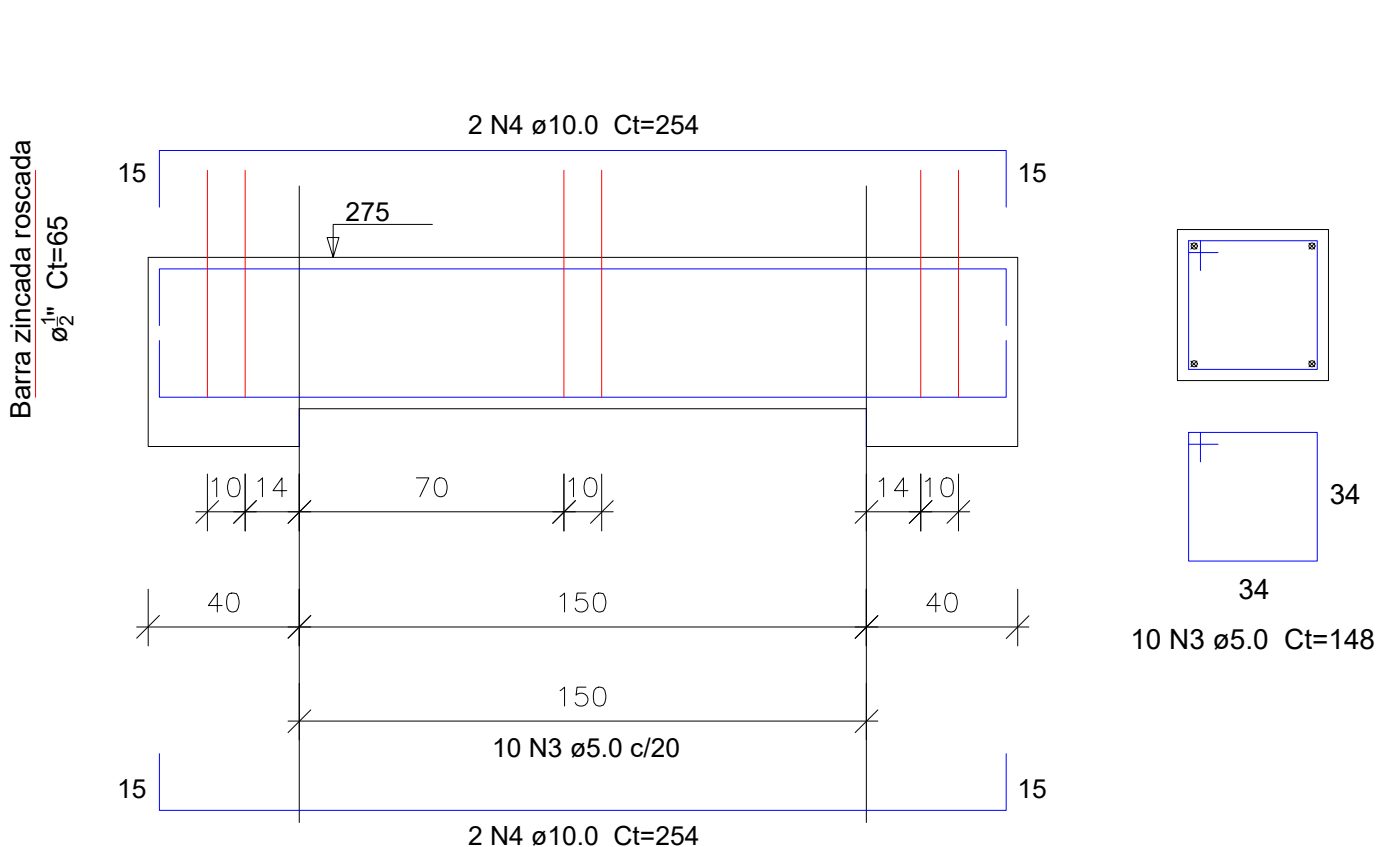
DETALHE 2  
1/15



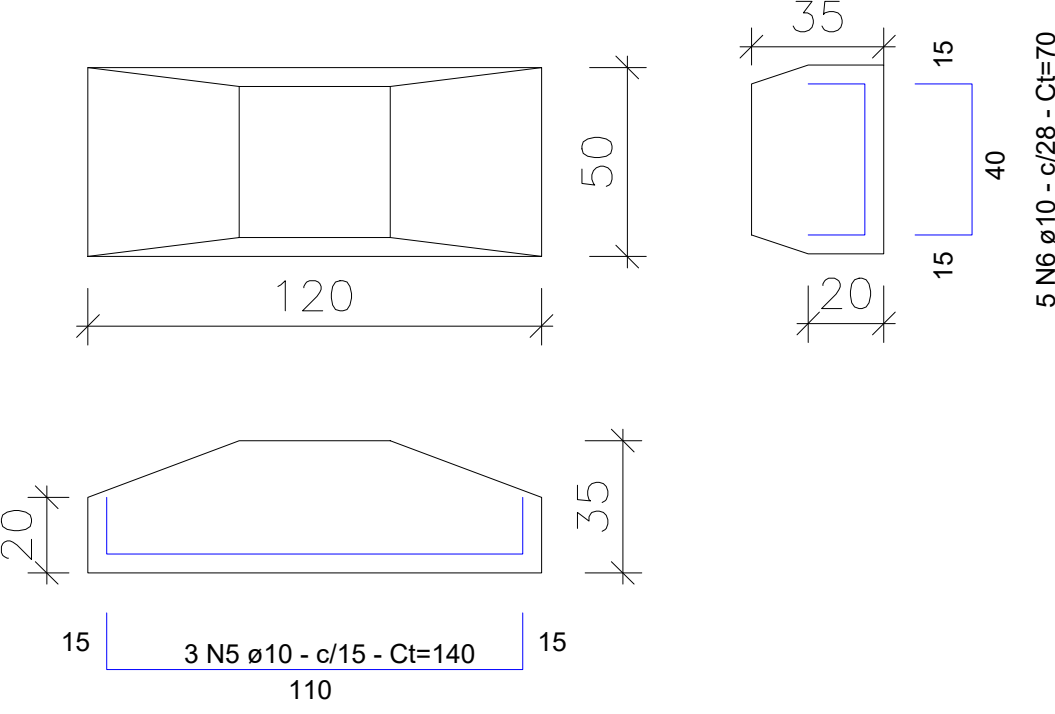
P1 IGUAL P2 (40X40)  
1/20



V1 (40X40)  
1/20



S1 IGUAL S2  
1/20



Relação do aço

| ACO  | N | DIAM (mm) | QUANT | C.UNIT (cm) | C.TOTAL (cm) |
|------|---|-----------|-------|-------------|--------------|
| CA60 | 1 | 5.0       | 44    | 148         | 6512         |
| CA50 | 2 | 10.0      | 8     | 312         | 2496         |
| CA60 | 3 | 5.0       | 10    | 148         | 1480         |
| CA50 | 4 | 10.0      | 4     | 254         | 1016         |
|      | 5 | 10.0      | 3     | 140         | 420          |
|      | 6 | 10.0      | 5     | 70          | 350          |

Resumo do aço

| ACO             | DIAM (mm) | C.TOTAL (m) | PESO + 10 % (kg) |
|-----------------|-----------|-------------|------------------|
| CA50            | 10.0      | 42.82       | 29.21            |
| CA60            | 5.0       | 271.5       | 13.55            |
| PESO TOTAL (kg) |           |             |                  |
| CA50            |           | 29.21       |                  |
| CA60            |           | 13.55       |                  |

Volume de concreto (C-25) = 1.51 m³  
Área de forma = 10.6 m²

NOTA:  
TODAS AS ANCORAGENS DE BARRA 1/2" EM VIGA DEVERÁ SER FEITO COMO DETALHE 1.  
TODAS AS LIGAÇÃO DEVERÃO SER FEITAS POR SOLDA FILETE CONTINUA COM PERNA DE 5MM

|  |                                      |   |
|--|--------------------------------------|---|
|  | <b>INSTITUTO FEDERAL FARROUPILHA</b> | <b>PRÓ-REITORIA DE ADMINISTRAÇÃO</b><br>COORDENAÇÃO DE ENGENHARIA E ARQUITETURA<br>Rua Camará, 426 - Faria Nova - Canoas - CEP 91310-747 - Santa Maria - Rio Grande do Sul.<br>Telefone: (51) 3274-6400 |
| OBRA: <b>CENTRO DE SAÚDE</b>                       |                                      |   |
| LOCAL: <b>IF FARROUPILHA - CAMPUS SANTO ÂNGELO</b> |                                      |   |
| PROJETO: <b>ESTRUTURAL</b>                         | ÁREA: <b>21,19 m²</b>                |   |
| CONTEÚDO: <b>MARQUISE METÁLICA</b>                 | ESCALA: <b>Definida</b>              |   |
| PROPRIETÁRIO: <b>INSTITUTO FEDERAL FARROUPILHA</b> | DATA: <b>Maio/2018</b>               |   |
|  | DESENHO: <b>Luis Felipe</b>          |   |
|  | FRANCHA: <b>01/01</b>                |   |